

# NEWSLETTER

## WAPPENBURY EATHORPE WESTON HUNNINGHAM



## SEPTEMBER 2016 DIARY

Tues-Weds 6-7th September	Free Property & Tack Marking, Police - see notice inside
Friday 9th September	Weston Toddlers restarts
Tuesday 13th September	Eathorpe Coffee Morning 10.30am
Tuesday 27th September	Deadline for Scarecrow Entry

## OCTOBER

Saturday 1st October	Weston Scarecrow Festival , Village Hall 5pm
Saturday 8th October	MacMillan Fund-raising day Eathorpe Village Hall 3-5pm
	Weston Cinema 8pm

**FRONT COVER PHOTO.....Making space for wild flowers ...bee friendly!**

This is one of the 'pictorial meadows' created by Coventry City Council and, yes, we would love to emulate it! This kind of scheme requires a great deal of effort from volunteers, as well as access to some heavy equipment to prepare the verges ready planting. Most of our verges in the village are suffering from having been mown too frequently over the years, and cuttings left to rot. This has resulted in a highly fertile sward that encourages only tough grasses and perennial weeds to thrive - quite the opposite type of soil liked by our traditional wildflower types.

The closest we get is the crop of valuable Ladies Smock that struggles on the edge of the ditch at the end of Sabin Drive. We hope to achieve even better results in other areas once the Warwickshire Wildlife Trust wins its Heritage Lottery Fund grant for the Princethorpe Woodlands Project. Money will then be available for more ambitious wildflower planting schemes. And won't the poor, struggling bees (and other insects) be glad? Weston Wildlife Conservation Group

Please come and help us save the bees!

**Weston Wildlife Conservation Group**

## HILLTOP · FARM

*Paid Advert*

Looking for a venue  
for a special occasion?



### Farm Shop . Café . Venue Hire . Glamping

Why not hire our café or our marquee set up on our beautiful grounds? Complete packages available for private parties, celebrations and weddings - glamping on site too.

Fosse Way , Hunningham, CV33 9EL Tel: 07966 797474 Visit: [hilltopfarmshop.com](http://hilltopfarmshop.com)

# VILLAGE NEWS - HUNNINGHAM

## Hunningham now has defibrillator

Good news for Hunningham residents. The village now has its own defibrillator located next to the back door of The Old Bakehouse, which is the thatched cottage next to the village church. A number of residents and the clerk to the Parish Council (Alan Winterburn) attended a training session run by Anne Foley of Tranter Training Solutions Limited. The village residents included John Ellis, Crick Ellis, Maggie Ellis, Beverleigh Twohig-Howell, Fenella Twohig-Howell, Pete Green and Margaret Green. See the photo showing them with the defibrillator now in position outside The Old Bakehouse. Note that you do not need to have been trained in order to use the defibrillator. If you do need to use it, it will give you simple, clear, step-by-step, verbal instructions to follow.

The defibrillator is currently being registered with West Midlands Ambulance Service so that anyone calling 999 who may be able to benefit from it, will be given its location details.

**Margaret Green**



## In memory of Maggie Walker

Those of us who knew Maggie (who died in June) remember a very smart and lovely lady. She supported as many village events as she could, and was always interested in all that was going on. She was a very special Mum, Grandmother and wife to Mike. Our love and thoughts are with Mike at this time.

**Hazel Taylor**



# VILLAGE NEWS - EATHORPE

## **We say goodbye to...**

September sees the departure from Eathorpe of three families, namely David & Sue, Pete & Judy and Suzanne & Edgar. We would like to thank them for the huge parts they played in village life, and to wish them every happiness in their new homes. They will be missed.

## **Village hall bookings**

Please call 01926 633196 or email [info@eathorpe.org.uk](mailto:info@eathorpe.org.uk) for future bookings.

## **Macmillan Fund Raising Day**

This year our event will be held on Saturday, October 8th from 3-5pm in the Village Hall. Please join us for afternoon tea. More details later.

## **Eathorpe Coffee Morning**

This will take place the second Tuesday of each month, starting Tuesday, September 13th. 10.30 - 12oclock in the Village Hall. Please come along, everyone welcome.

**Jill Wheeler**



## **In memory of Ronald Frederick Pladdys 1939 -2016**

Ron had been a resident of Eathorpe for about 15 years and we were all shocked and deeply saddened to learn of his sudden passing on June 27th. We send our sincere condolences, thoughts and prayers to all of his family at what must be a dark time for them all. Ron was a good friend and neighbour to us all. He could often be found walking between Eathorpe and the neighbouring villages, and at Wappenbury church visiting his late wife Jill's grave. Ron was a generous supporter of Wappenbury church, and we have him to thank for the restoration of the stained glass in the west wall at the back of the church which was carried out in memory of Jill Pladdys. Ron has now been laid to rest with his beloved Jill.

We will miss and remember him.

On a lighter note I was pleased to find out all three of his cats will be re-homed.

**Mick Lewis, Eathorpe**



WESTON CINEMA 8th OCTOBER 2016

# EDDIE THE EAGLE

TWO UNDERDOGS  
ONE DREAM



WESTON UNDER WETHERLEY VILLAGE HALL (CV33 9GA)

Saturday 8 October 8pm £6

Tickets available from [ticketsource.co.uk/westoncinema](http://ticketsource.co.uk/westoncinema); Gordon: [westoncinema@gmail.com](mailto:westoncinema@gmail.com);

Jeff & Jenny Arnold: 01926 632330 or [jandjarnold@btinternet.com](mailto:jandjarnold@btinternet.com)

Bar and snacks will be available / Find us on [Facebook.com/WestonCinema](https://www.facebook.com/WestonCinema)

[BigPictureShow.org.uk](http://BigPictureShow.org.uk)



# VILLAGE NEWS - WESTON

## Weston NGS Open Gardens 2017 June 10th-11th

Following this year's superb effort by our friends in Hunningham, Weston will once again take up the challenge and around eleven of our gardens will be open over the weekend of June 10th and 11th, 2017. We are delighted that we have some new gardens opening and a couple of special features that we will tell you about later.

As chair of the organising committee, I would like to acknowledge that the opening is quite an imposition on the village. Traffic over the weekend is likely to be high and there will be pressure on parking, especially in Sabin Drive/Alderman Way. Once again we will be asking the District Council and of course our residents for permission to use most of the playing field as a car park. We will do everything we can to mitigate the impact, and hope that we will provide a really enjoyable weekend for villagers as well as visitors.

The justification, of course, is that we hope to raise lots of money for the NGS and local charities, as well as our own village funds. Last year we raised over £6,500: let's see if we can beat that in 2017! It's really up to everyone - the more participation we can get, the more we can raise. Please mark your calendars now, and be prepared to help with the efforts towards making this a really successful event!

**Peter Haine**

The logo features the text "ngs gardens open for charity" in a green, sans-serif font. The letters "ngs" are significantly larger and more stylized than the rest of the text. The entire logo is set against a bright yellow background that is shaped like a right-pointing arrow.

ngs gardens open  
for charity



Weston under Wetherley



# WESTON VILLAGE HALL TRUST

## NEW TREASURER NEEDED

The Village Hall Trust require a new **Treasurer** following a sudden resignation. The role is a key one in the Trust and is a service to the community at Weston as well as being an opportunity to get to know people in and around the village. The village hall is a key asset of the community here and we need to support it if it is going to be a sustainable building focussed on community needs. If you have numeracy skills and can manage simple tasks on a computer like Xcel and internet banking, we would love to hear from you.

### Treasurer Job Description

Competent and reliable person required to undertake the role of Treasurer.

The Village Hall Trust is a registered charity and is not VAT registered.

The post will average about hours 5 per month, with some possible extra time when doing the year-end accounts, annual audit & (for example) changing bank signatories.

The role is remunerated on an honorarium basis of £425 annually plus any reasonable expenses incurred.

The role is to take responsibility for the Village Hall Trust accounts and to attend meetings, which are usually held quarterly (weekday evening meetings 7.30 to 9.30pm) at the village hall.

<u>Skills and Experience</u>	Essential	Desirable
Experience of maintaining accurate financial records	X	
Experience of online banking systems		X
Experience of spreadsheets or electronic accounts systems	X	
Good references from 2 independent referees	X	
Own computer and Internet connection **	X	

Income from bookings is by bank transfer. Handling of cheques and cash is avoided as a priority.

**Please contact Hall Trust Chairman Martin Roberts for more details and an informal chat.**

**Martin Roberts**

**Mob: 0775 2046 154**

**Land line: 01926 632484**

# NEIGHBOURHOOD WATCH

THIS IS A CRIME  
FREE ZONE



For the safety and enjoyment of others, please refrain from criminal activities while here. Thank You!

Just back from our holiday break, and was pleased to note that there were no crimes or incidents reported for our villages in the latest Police Newsletter. Let's hope this trend continues!

The Police have, however, asked me to bring to everyone's attention the following event, which they are staging next month:.

## **FREE PROPERTY & TACK MARKING**

*Offchurch, Hunningham, Eathorpe & Wappenbury*

*Tuesday 6th September 2016, 5pm – 9pm Wednesday 7th September 2016, 5pm – 9pm*

*This free property marking offer is available to residents and businesses in the above mentioned joint parish area. Warwick Rural East Safer Neighbourhood Team and a representative from Warwickshire Rural Watch shall be conducting a mobile property marking event in your area. We'll attend your home address, provide you with relevant crime prevention material and visibly mark up to 10 items for free. Property will be marked with Cre-Mark. Leather tack can be stamped.*

*Please ensure that there is a clean surface on any items that you would like to be marked. Items will be marked with either your house number or the initials of your house name and your postcode.*

*If you would like your lawn-mower, strimmer, power tools etc, to be visibly property/tack marked, please call PCSO 6223 Ed King on 01926 684471 to book a time-slot for us to attend your property.*

*Warwick Rural East SNT – 01926 684471 – [wre.snt@warwickshire.pnn.police.uk](mailto:wre.snt@warwickshire.pnn.police.uk).*

I trust this is all self- explanatory.

That's it for this month.

Paddy Taylor  
632428





# CHURCH SERVICES

Sunday 4th September	11am Wappenbury	3 Parishes Morning Service
Sunday 11th September	10am Offchurch  6pm Weston	4 Parishes Holy Communion with Sunday School  Evensong
Sunday 18th September	<b>NO SERVICE at Weston</b>	
Sunday 25th September	11am Hunningham	Come2Worship with Junior Church and the Pilgrim Puppets

## ADVERTISE YOUR SERVICE OR BUSINESS HERE!

The Newsletter is hand delivered to all the houses in our 4 villages, over 350 copies, as well as sent to an increasing email list. The Newsletter is also published on the village website every month. Make use of this valuable local resource, and help keep it afloat at the same time.

Contact Moira [moirarawlings@btinternet.com](mailto:moirarawlings@btinternet.com) to place your ad.

### Current Advertising rates

(January to December or pro rata)

**Full Page £70**

**Half Page £50**

**Quarter Page £30**

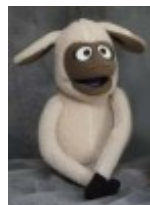
### ***THE PILGRIM PUPPETS***

Saturday 17<sup>th</sup> September - Offchurch Messy Church - 3.00pm

Sunday 18<sup>th</sup> September - Harbury Church 10.30am

Monday 19<sup>th</sup> September - Little Ray of Sunshine Café  
Kenilworth 11.15am

Sunday 25<sup>th</sup> September - Come 2 Worship Hunningham  
Church 11.00am



## EATHORPE ALLOTMENTS



Well! August already and the season is racing ahead. It has been a peculiar summer, with lots of rain earlier together with higher temperatures meant that everything seemed so keen to rush on to the finish! It has been a harder task than usual to keep on top of the weeds which seemed to share the same message.

Overall it has not been a bad year at all, and my freezer is again full of vegetables ready for the winter. The only real niggle about my own allotment has been what I think is a mystery visitor during the darker nights, who has enjoyed nibbling the tops off my entire crop of beetroot. I guess it is the Muntjac deer that I occasionally see across the field opposite. I wonder what venison with beetroot would taste like!

Of late the long hot dry days has meant a more dedicated watering routine has been necessary, yet the plants have been remarkably resilient and survived well. But now, with the rain back, I guess everything will be re-invigorated and energetic again. Like so with the orchard – we were spared the agony of harsh frosts during blossom time and as a result most of the trees have produced a bumper crop particularly of apples, thanks to the rain, and the warm temperatures, though sadly the occasional high blustery winds have also resulted in a few breakages and one tree in particular has virtually split itself into three! So, we must remember to prune harder for next season!

We have at the moment one full and one half plot available and how can I keep repeating the same message that this place is such a quiet, peaceful, even a private place to enjoy easy gardening. The important message is that everything grown is organic (a personal choice), it is honest and home grown – fresh and real. Potatoes have never tasted so good, in fact everything has tasted so good that shop bought produce is a real disappointment now.

So we are now looking forward to a big crop and share out for all the sponsors of the orchard and an opportunity to enjoy the fruits (literally) of our labour – Happy days!

**Maurice Wood**



## ADVERTS

*Paid Adverts*

***Come and join us for Cricket, Tennis and Netball !!***

**We are a small, friendly, local sports club, with good playing facilities and new clubhouse in lovely rural surroundings, and are keen to attract new players and families of all ages and abilities.**



***Cricket*** – Sunday “friendly” Cricket with the emphasis on fun and everyone having a go, for adults and youth, who want to play occasionally or regularly. All abilities most welcome to join us, even if you haven’t played for some time. Please contact **Guy Mander: 07779 644275**

***Tennis*** – Two good floodlit courts. Families, experienced players and beginners are all very welcome. We also play in the local Rugby tennis league. Please contact **Jon Thorne: 07584 901116**.

***Netball*** – Adults and juniors of all abilities welcome. We train every Monday from 7.15pm during the summer at the Sports Club and we currently have two teams that play in the Coventry & Warwickshire League.

Please contact **Katie Brazier: 07770 965122** or **Abbey Richards 07733 033341**. Come and have a go – we look forward to seeing you!!

**Mark Swaby    Chairman**

### **OFFCHURCH SPORTS CLUB CRICKET    TENNIS    NETBALL**

## **BEDS AND MATTRESSES AT CRAZY PRICES**



**HIGH QUALITY BED & MATTRESSES  
SECONDS AND EX DEMONSTRATORS**

**3'0 MATTRESS £30**

**4'6 MATTRESS £5**

**5'0 MATTRESS £60**

**COMPLETE BEDS AVAILABLE ALL SIZES**

**PHONE: 07765851202 FREE LOCAL DELIVERY**

# VILLAGE NEWS - WESTON

## WESTON SPORTS-SCARECROW FESTIVAL

29th September-1st October 2016

*Free Entry!!*

**GOLD £50   SILVER £25   BRONZE £10**



Make a life-sized Scarecrow based on any sport to display outside your house as part of the Weston Scarecrow Festival and save Saturday 1st October for the Scarecrow BBQ, Beer & Music evening in the Village Hall when cash prizes for the best Scarecrows will be awarded.

### **To enter your Scarecrow:**

**By 27th Sept** - Email, text or phone Glynis, Bren or Mandie to say you are entering the competition (cash prizes folks!). Make your Scarecrow based on a sports theme. Entry is free and Scarecrows will be given a number to show where they are on the Trail Map. Your number will be delivered to you in time for you to pin securely to your Scarecrow.

Fix your amazing Sports Scarecrow (with its number attached) to the outside of your house/gate/fence/tree somewhere in Weston, where it can be clearly seen by people walking by.

**29th Sept by 9.30am** - Scarecrows should be in place with number on ready for photographs and judging to take place. You do not need to be present for this. Photos will be shown on the Weston village facebook page - identified by their number only.

**30th Sept** - Free Trail Maps available outside village hall.

**1st October - 5pm onwards** - BBQ food, beer, wine & soft drinks for sale, plus music & prizes awarded in the village hall.



**Glynis 07799 643331  
Bren 07769 913686  
Mandie 07855 263178**



## GREEN MATTERS

Hot summers are not guaranteed in the UK but they generally involve more outdoor activity than usual. Last week we had a few days in the Forest of Dean - many parts of which are actively managed for wildlife by the Forestry Commission. There are excellent areas for families to roam and appreciate the green space. Children seem to love being out in nature if they are given the chance and this surely helps to build their confidence and love of the natural environment.

Our son runs a boating business in the parks at Warwick and Leamington and just standing watching groups of excited children paddling off along the peaceful, leafy river is somehow an uplifting experience. Despite the dominance of screen based activities in so much of our lives, there seems to be a natural attraction for kids to connect with nature which, once triggered, stays with them and often grows.

This affinity with nature appears to be timeless. Around 100 years ago in *Wind in the Willows*, Ratty advises Mole *"there's nothing absolutely nothing half so much worth doing as simply messing about in boats"* - the whole delightful book is an appreciation of the joys of the simple natural world from the perspective of the animals who live on the riverbank.

As adults it is easy to forget our own formative experiences as children and also to forget how powerful and enriching time in open spaces can be for the young. Brought up in suburban London, I can still clearly remember a few holidays in the country without my parents and the adventures in the woods playing with other children. These memories become part of you.

Many schools now recognise the importance of building a sense of wonder in nature within children and have "forest schools" as part of the curriculum and organisations like the Scouts and Girl Guides are still going strong. Apart from being good for our health, outdoor life is good for the soul and some doctors are now prescribing outdoors activities for mental health conditions like depression.



We are lucky to live with open countryside all around us and I hope that we are able to nurture a new generation who will have a passion for retaining our natural habitat and wildlife despite the pressures of the modern world.

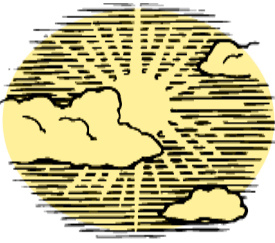
*"All this he saw, for one moment breathless and intense, vivid on the morning sky; and still, as he looked, he lived; and still, as he lived, he wondered."*

(Kenneth Grahame, *The Wind in the Willows*)

**Owen Bishop, Eathorpe**



# WEATHER



**June** started quite settled but things soon became much more changeable and unsettled with frequent and violent local thunderstorms as well as longer spells of rain. These storms were very hit and miss but were torrential if they hit. It was a warmer than normal June and this was mainly due to warm overnight temperatures.

There were 14 days of measureable rain with the wettest being the 8th with 25.5mm and the 16th with 25mm The warmest day occurred on the 7th when we enjoyed 28C but which was oppressively humid. The coolest daytime temperature was on the 1st with 14C.

The nights were especially warm and sticky with 16C achieved 3 times. The coolest was the 29th at 8.5C.

**July** started showery and cool and unsettled. There were then spells of hot and sunny weather and it was generally dry for the rest of the month. Overall the month was warmer than normal and also very dry. There were 6 days of rain with the wettest being the 28th with 7mm making it my second driest July. It was also the warmest July that I have recorded.

	June 2016	Long term average	Highest recorded	Lowest recorded
Rainfall	116.75m m	53.812m m	144.5mm (2007)	8mm 2006
Average max Daily temp	21C	20.984C	23.85C (2006)	15.95C (1991)
Average min Daily temp	12.9C	10.0453 C	11.483C (2014)	7.65C (1996)
Monthly Average temp	16.95C	15.5149 C	17.625C (2006)	12.29C (1991)

# WEATHER

(July cont.)

Whilst daylight temperatures were normal it was the high average nightly temperatures that raised the overall mean. The warmest day was the 9th with 33C and the coolest day the 13th with 20C. The warmest night was the 29th with 21C which with the humidity made it very uncomfortable to sleep. The coolest night time temperature was 9.5C on the 6th.

On a nature note I have recently had 3 interesting bird sightings. A few weeks ago I had a red kite soaring over the cottage for about half an hour. Whilst they are beautiful and graceful birds I fear that in the near future they will become as common and annoying as the buzzards.

My second sighting was a noisy pair of Ravens wheeling over the farm. Whilst ravens are a very occasional sight I have never seen a pair or ones so noisy. My last view was of a pair of bullfinches on my apple tree. These birds are much less common than they used to be and I cannot remember when I last saw one in the garden let alone two. They are beautiful birds.

**Mark Hancock 01926 632197 / 07801424003**

	July 2016	Long term average	Highest recorded	Lowest recorded
<b>Rainfall</b>	<b>16mm</b>	<b>66.412mm</b>	<b>144.8mm (1992)</b>	<b>14mm (1995)</b>
<b>Average max Daily temp</b>	<b>23.097C</b>	<b>23.2932C</b>	<b>27.16C (2006)</b>	<b>20.694C (2007)</b>
<b>Average min Daily temp</b>	<b>14.86C</b>	<b>12.128C</b>	<b>14.516C (2016)</b>	<b>9.6129C (2011)</b>
<b>Monthly Average temp</b>	<b>18.806C</b>	<b>17.710C</b>	<b>20.726C (2016)</b>	<b>15.8871C (2011)</b>



## Selling your home?

Introductory offer, £800 off standard fees



Contact us for a free market appraisal  
on 01926 422251 or email

[amy.cunningham@belvoir.co.uk](mailto:amy.cunningham@belvoir.co.uk)



## Cool Breeze Technology Services

Specialised IT and Technology Support for the Retirement Community

For all of your IT and technology needs. I have over 25 years of experience and undertake all work at your home. No job is too small so if you have issues with Wi-Fi, Windows has crashed or you are thinking about buying a new iPad or TV? Give me a call. I provide patient 1-2-1 tuition whilst I undertake my work so that you understand what I am doing and learn as I resolve your problems.

I work from my home in Leamington and provide quotations prior to undertaking all work so that you can decide if you wish to continue. No call out fees and no charge for work I cannot fix. A flat £35 hourly fee is all I charge.

**I work Monday to Saturday so give me a call.**

**Gary on 07814 236595**

**[www.coolbreezetechnologyservices.co.uk](http://www.coolbreezetechnologyservices.co.uk)**



Happier at  
Home

- Cat Sitting -

Are you going on holiday or away for the weekend? If you would like your cat(s) to stay in familiar surroundings at home, let us take care of them!

Prices from £8 a visit for up to 2 cats.

See: [www.happierathome.co.uk](http://www.happierathome.co.uk) for more details  
or call Helen on 07801552207

## Computer Problems? Call Jan Lucas Bubbenhall

System set up  
Trouble shooting  
Personal tuition (all levels)  
**02476 307 988 / 07847 015 154**  
**www.bootfinder.co.uk**  
*Websites also undertaken*



## Flowers for special occasions

Call 01926 429987  
awaywithflowers@btinternet.com



Pamela Gordon 17 Boddington Close Cubbington CV32 7LT

## Painful feet?

Community Podiatrist in Weston  
and surrounding areas

*Diabetes, nail care, corns and cal-  
lous, pain and musculo-skeletal*

**hcpc** health & care  
professions  
council



Sarah Arnold  
BSc (hons) Podiatry, MChS,  
HCPC registered  
07561862216 or westonpod@gmail.com



# AIMS<sup>®</sup> ACCOUNTANTS FOR BUSINESS

## ***YOUR OWN BUSINESS?***

*Accounting and Taxation Service from  
a qualified professional with a keen pricing structure.  
All charges agreed in advance.*

*I will come round to you and  
there is no charge for first meetings.*

**Mike Fairbotham BSc FCA**

01926 887878

michaelf@aims.co.uk      www.aims.co.uk



## **Physiotherapy in Hunningham**

*Spinal, Sport Injuries, Musculo-Skeletal, Orthopaedic*

**Sonya Austin**

MCSP, HPC, GRAD.DIP.PHYS

**632 523 or 07973 105 231**

*Approved by all Insurance Funds, Doctor's Referral not necessary*



**Eddie Croxall**  
**Painter & Decorator**

1 Ellerton Grove  
Leamington Spa, CV31 1YN

Tel: 01926 882 420

Mobile: 07778 283 244

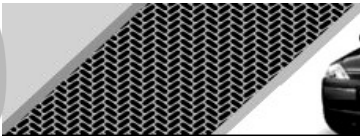




**PeterBrooke**

Plans drawn for Planning and Building Regulations for New Houses,  
House Remodelling, Extensions, Loft Conversions, Renovations.  
Free, no obligation, first meeting.

Tel 01926 633691  
Mob 07740213572  
email [peterbr@live.co.uk](mailto:peterbr@live.co.uk)



## APOLLO SCHOOL of MOTORING

Local driving school  
27 years experience  
Refresher and Intensive courses  
Theory test help  
Top grade instruction at competitive rates

Call Paul on **01926 632698** or **07771 686078**

[www.apolloschoolofmotoring.com](http://www.apolloschoolofmotoring.com)





Letting your home?  
Be with a winner!



Contact us on 01926 422251 or  
email [leamingtonspa@belvoir.co.uk](mailto:leamingtonspa@belvoir.co.uk)

# WE WANT YOUR PROPERTY

CALL US TODAY FOR YOUR FREE  
VALUATION ON **02476 222 123**



FIND OUR PROPERTIES ON

 **rightmove.co.uk**  
The UK's number one property website

**Zoopla**  
Smarter property search



**shortland-horne.co.uk**





## Thoughtspiration!

*Are you suffering from stress?  
Change negative thoughts/feelings for positive.*

# GHR

*Do you: Suffer from low self esteem or depression? Have any fears or phobias?  
Suffer anxiety or panic attacks? Wish you could change your attitude to life?  
Want to sleep better? Have little or no will power and wish you had more?*

I may be able to help with such problems, using a variety of gentle counselling, talking therapies, hypnotherapy, rewind techniques or recursive brainworking™, in a totally relaxing confidential environment.

Please ring Pippa Jamie DipHYP(ETUK) GQHP on **07775 830987**, or send an email to [thoughtspiration@therapist.net](mailto:thoughtspiration@therapist.net) for a free, no obligation, initial consultation or just to find out more (based in Weston-under-Wetherley).

*Member of the National General Hypnotherapy Register  
GHR qualified recursive brainworking therapist*

## Commercial & Domestic Tree Surgeons

All aspects of tree and hedge work  
carried out to industry standards

**Tree Removal**

**Fruit Tree Pruning**

**Crown Reduction & Shaping**

**Hedge Trimming & Reduction**

**Crown Thinning**

**Tree Planting**



All work carried out to BS 3998  
Full Public Liability Insurance  
NPTC Certified & FdSc Qualified

Chris Eastaff  
FdSc Arboriculture

[www.elementtreecare.co.uk](http://www.elementtreecare.co.uk)  
[info@elementtreecare.co.uk](mailto:info@elementtreecare.co.uk)

Free advice and quotations Tel: 01926 883 385  
Mobile: 07790 553 110



## USEFUL INFORMATION (several new numbers)

### **Weston village hall:**

[www.westonvillagehall.org.uk](http://www.westonvillagehall.org.uk)

[bookings@westonvillagehall.org.uk](mailto:bookings@westonvillagehall.org.uk) or 07949 638366

village website : [www.westonunderwetherley.parishcouncil.net](http://www.westonunderwetherley.parishcouncil.net)  
(website email [westonpcclerk@gmail.com](mailto:westonpcclerk@gmail.com))

**Eathorpe village hall:** [www.eathorpe.org.uk](http://www.eathorpe.org.uk)

01926 633196 [info@eathorpe.org.uk](mailto:info@eathorpe.org.uk)

**Hunningham Parish Room:** 01926 632852

**Community Transport Scheme** Contact Peter Haine: 01926 633153 or  
email [phaine@btinternet.com](mailto:phaine@btinternet.com)

### **University Hospitals, Coventry and Warwickshire NHS Trust**

(formerly Walsgrave) 024 7696 4000

**Warwick Hospital:** 01926 495321

**Leamington Police Station:** 01926 410111



### **Libraries:**

All local libraries now reached on 0300 555 8171

Mobile library every 3rd Friday (2/9/16, 23/9, 14/10, 4/11, 25/11, 16/12)

Weston, St Michaels Close, 9.45-10am

Marton, Shepherd St 11-1130

Offchurch, Old Post Office 9.15-9.35

### **Warwick District Council:**

Main line: 01926 450000 or [contactus@warwickc.gov.uk](mailto:contactus@warwickc.gov.uk)

Your neighbourhood (recycling, refuse, parks, lighting, parking): 01926 456128

Council tax and benefits: 01926 456760

Planning: 01926 456536 Building regs: 01926 456517

Business: 01926 456760 Housing: 01926 456129

## EDITOR & ADVERTISING MANAGER

**Editor:** Katie Alcock 634779 [oxfordflutes@yahoo.co.uk](mailto:oxfordflutes@yahoo.co.uk)

**Advertising manager:** Moira Rawlings 634766

[moirarawlings@btinternet.com](mailto:moirarawlings@btinternet.com)